



Prüfbericht - Nr.: 0114084381c3 001		Seite 1 von 5	
<i>Test Report No.:</i>		<i>Page 1 of 5</i>	
Auftraggeber:	Chi Mei Corporation		
<i>Client:</i>	No.59-1, Sanjhazi, Rende Dist., Tainan City 71702, Taiwan, R.O.C.		
Gegenstand der Prüfung:	ACRYLONITRILE-BUTADIENE-STYRENE COPOLYMER		
<i>Test Item:</i>			
Bezeichnung:	POLYLAC® PA-747		
<i>Identification:</i>			
Anlieferungszustand:	apparent good	Eingangsdatum:	2018-11-29
<i>Delivery condition:</i>		<i>Date of Receipt:</i>	
Prüfart:	TÜV Rheinland (Shanghai) Co. Ltd.		
<i>Testing location:</i>			
Prüfgrundlage:	According to RoHS (recast): Restriction of the Use of Certain Hazardous Substances in Electrical and Electronic Equipment, 2011/65/EU last amended by (EU) 2015/863: Total Content of Lead, Cadmium, Mercury, Chromium VI, Polybrominated Biphenyls, Polybrominated Diphenyl Ethers; and Benzylbutyl phthalate (BBP), Dibutyl phthalate (DBP), Bis(2-ethylhexyl) phthalate (DEHP), Diisobutyl phthalate (DIBP)		
<i>Test specification:</i>			
Prüfergebnis:	According to the kind and extend of tests performed the above mentioned test item passed the test specification.		
<i>Test result:</i>			
geprüft: tested by:	kontrolliert: checked by:		
			
2019-01-02 Fanny Lin /Project Coordinator		2019-01-02 Tammy Wang /Assistant Manager	
Datum	Name/Stellung	Unterschrift	Datum
<i>Date</i>	<i>Name/Position</i>	<i>Signature</i>	<i>Date</i>
Sonstiges/ Other Aspects:			
Test period: 2018-11-29 – 2019-01-02			
Abkürzungen:		Abbreviations:	
ok / P = entspricht Prüfgrundlage		ok / P = passed	
fail / F = entspricht nicht Prüfgrundlage		fail / F = failed	
n.a. / N = nicht anwendbar		n.a. / N = not applicable	
<p>Dieser Prüfbericht bezieht sich nur auf das o.g. Prüfmuster und darf ohne Genehmigung der Prüfstelle nicht auszugsweise vervielfältigt werden. Dieser Bericht berechtigt nicht zur Verwendung eines Prüfzeichens.</p> <p><i>This test report relates to the a. m. test sample. Without permission of the test center this test report is not permitted to be duplicated in extracts. This test report does not entitle to carry any safety mark on this or similar products.</i></p>			



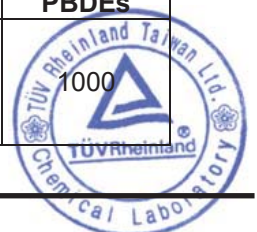
Test Report No. : 0114084381c3 001 2019-01-02
 Customer : Chi Mei Corporation
 Test Method : Total Cadmium, Lead, Mercury, Chromium
 - Ref. to IEC 62321-4:2013 and IEC 62321-5:2013
 Chromium (VI)
 - For Metal material - Ref. to IEC 62321-7-1:2015
 - For Plastic or Electronic material - Ref. to IEC 62321-7-2:2017
 - For Leather material - Ref. to EN ISO 17075-1:2017
 PBBs, PBDEs - Ref. to IEC 62321-6:2015

Sample Material Lab.-No.	LoD	POLYLAC® PA-747 plastic/off white TCL181129-24	
Cadmium (Cd) mg/kg	2	n.d.	
Lead (Pb) mg/kg	2	n.d.	
Mercury (Hg) mg/kg	2	n.d.	
Chromium VI (Cr VI)** mg/kg	8*	n.d.	
Sum of Polybrominated biphenyls (PBBs) mg/kg	-	n.d.	
Monobromobiphenyl mg/kg	5	n.d.	
Dibromobiphenyl mg/kg	5	n.d.	
Tribromobiphenyl mg/kg	5	n.d.	
Tetrabromobiphenyl mg/kg	5	n.d.	
Pentabromobiphenyl mg/kg	5	n.d.	
Hexabromobiphenyl mg/kg	5	n.d.	
Heptabromobiphenyl mg/kg	5	n.d.	
Octabromobiphenyl mg/kg	5	n.d.	
Nonabromobiphenyl mg/kg	5	n.d.	
Decabromobiphenyl mg/kg	5	n.d.	
Sum of Polybrominated diphenyl ethers (PBDEs) mg/kg	-	n.d.	
Monobromodiphenyl ether mg/kg	5	n.d.	
Dibromodiphenyl ether mg/kg	5	n.d.	
Tribromodiphenyl ether mg/kg	5	n.d.	
Tetrabromodiphenyl ether mg/kg	5	n.d.	
Pentabromodiphenyl ether mg/kg	5	n.d.	
Hexabromodiphenyl ether mg/kg	5	n.d.	
Heptabromodiphenyl ether mg/kg	5	n.d.	
Octabromodiphenyl ether mg/kg	5	n.d.	
Nonabromodiphenyl ether mg/kg	5	n.d.	
Decabromodiphenyl ether mg/kg	5	n.d.	

Notes:

- n.d. - not detected
- LoD - Limit of Detection
- mg/kg is equal to ppm (parts per million)
- * method detection limit according to IEC 62321-7-2
- **Once the total Cr content in metal/ plastic or electronic sample is found to be exceeded the limit, the Cr (VI) content will be confirmed with reference to IEC 62321-7-1:2015/ IEC 62321-7-2:2017

	Cd	Cr(VI)	Pb	Hg	PBBs	PBDEs
Maximum permissible Limit acc. to 2011/65/EU (mg/kg)	100	1000	1000	1000	1000	1000



Test Report No. : 0114084381c3 001
 Customer : Chi Mei Corporation
 Test Method : BBP/DBP/DEHP/DIBP - Ref. to IEC 62321-8:2017

2019-01-02

Sample Material Lab.-No.	LoD	POLYLAC® PA-747 plastic/off white TCL181129-24
Benzylbutylphthalate (BBP) mg/kg	50	n.d.
Dibutylphthalate (DBP) mg/kg	50	n.d.
Diethylhexylphthalate (DEHP) mg/kg	50	n.d.
Diisobutylphthalate (DIBP) mg/kg	50	n.d.

Notes:

- n.d. - not detected
- LoD - Limit of Detection
- mg/kg is equal to ppm (parts per million)

	BBP	DBP	DEHP	DIBP
Maximum permissible Limit acc. to (EU) 2015/863 (mg/kg)	1000	1000	1000	1000

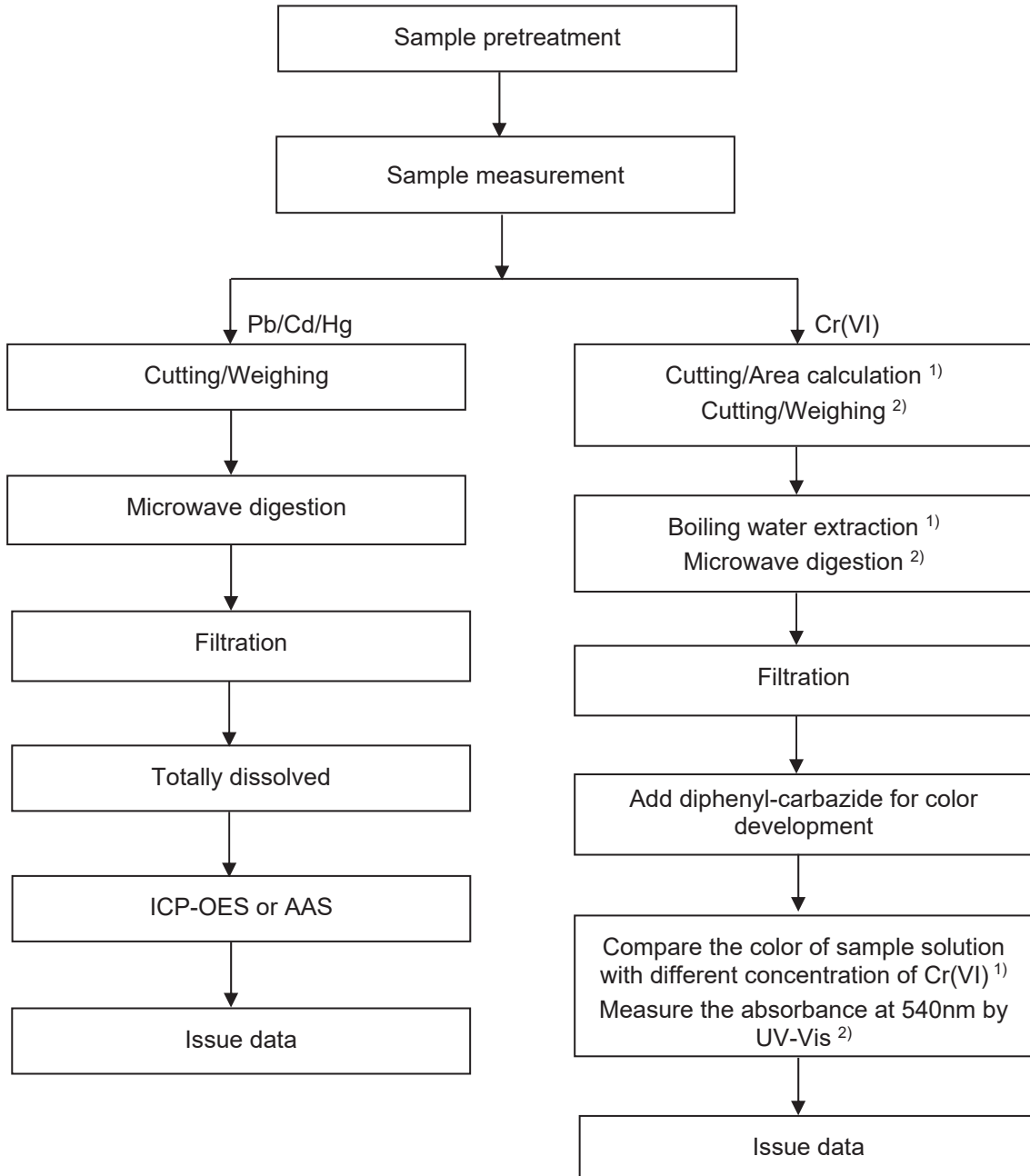
Test Sample


Test Report No. : 0114084381c3 001
 Customer : Chi Mei Corporation

2019-01-02

Testing procedure:

RoHS (Pb, Cd, Hg, Cr(VI))



Notes: ¹⁾ For metallic material
²⁾ For non-metallic material

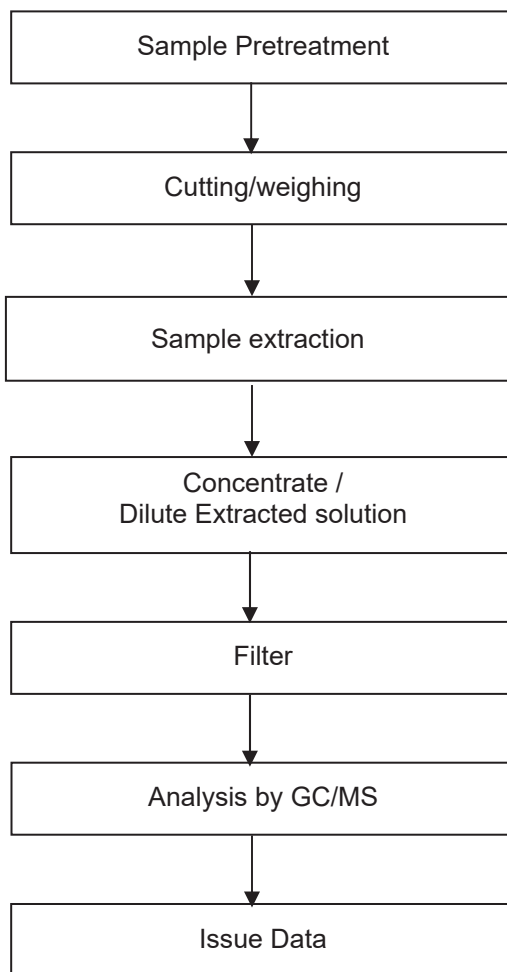


Test Report No. : 0114084381c3 001
Customer : Chi Mei Corporation

2019-01-02

Testing procedure:

RoHS (PBBs/PBDEs, DEHP/DBP/BBP/DIBP)



--- End of Test-Report ---

